

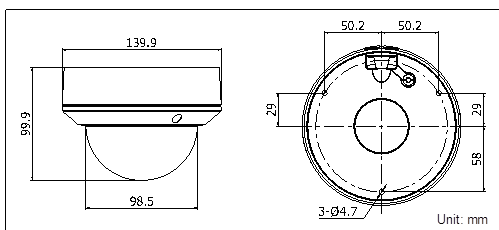
DS-2CD2720F-I(S) (2MP) VF IR Dome Network Camera



Key features

- Up to 2MP (1920 x 1080) high resolution
- HD real-time video
- IR LEDs: up to 30m
- DWDR & 3D DNR & BLC
- Onboard storage (up to 64GB)
- (-S) Audio I/O, Alarm I/O
- IP66
- Vandal-proof

Dimensions



Accessories



DS-1227ZJ
In-ceiling mount



DS-1273ZJ-135
Wall mount



DS-1280ZJ-DM21
Junction box

Available models

DS-2CD2720F-I, DS-2CD2720F-IS

* -S: Audio I/O interface and Alarm I/O interface.

DS-2CD2720F-I (S)	
Camera	
Image sensor	1/3" progressive scan CMOS
Min. illumination	0.01 lux @F1.2, AGC ON, 0 lux with IR, 0.014 lux @F1.4, AGC ON, 0 lux with IR
Shutter time	1/25s ~ 1/100,000s
Lens	2.8 ~ 12 mm @F1.4, angle of view: 113° ~ 33.8°
Lens mount	Φ14
Auto iris	-
Day & night	IR cut filter with auto switch
Digital noise reduction	3D DNR
Wide dynamic range	Digital WDR
Backlight compensation	Yes, zone configurable
Angle adjustment	Pan:0° - 355°, Tilt: 0° - 75°, Rotation: 0° - 355°
Compression Standard	
Video compression	H.264 / MJPEG
H.264 codec profile	Main profile
Bit rate	32 Kbps ~ 16 Mbps
Audio compression(-s)	G.711 / G.726 / MP2L2
Audio bit rate(-s)	64 Kbps (G.711) / 16 Kbps (G.726) / 32-128 Kbps (MP2L2)
Image	
Max. Image Resolution	1920 × 1080
Frame rate	50 Hz: 25 fps (1920 x 1080)
	60 Hz: 30 fps (1920 x 1080)
Image settings	Rotate mode, Saturation, brightness, contrast, sharpness adjustable through client software or web browser
ROI	Yes, up to 4 configurable areas
Network	
Network storage	NAS
Alarm trigger	Motion detection, tampering alarm, network disconnect, IP address conflict, storage full, storage error
Protocols	TCP/IP, ICMP, HTTP, HTTPS, FTP, DHCP, DNS, DDNS, RTP, RTSP, RTCP, PPPoE, NTP, UPnP, SMTP, SNMP, IGMP, 802.1X, QoS, IPv6, Bonjour
System compatibility	ONVIF, PSIA, CGI, ISAPI
General functionalities	User authentication, watermark, dual stream
Interface	
Communication interface	1 RJ45 10 M / 100 M Ethernet interface
Onboard storage	Built-in Micro SD / SDHC / SDXC card slot, up to 64 GB
General	
Operating conditions	-30 °C ~ 60 °C (-22°F ~ 140 °F) humidity 95% or less (non-condensing)
Power supply	12 VDC ± 10% , PoE (802.3af)
Power consumption	Max. 5.5W (max. 7W with ICR on)
Impact protection	IEC60068-2-75Eh, 20J; EN50102, up to IK10
Ingress protection level	IP66
IR range	Approx. 30 meters
Dimensions	Φ140 x 99.9 mm (Φ 5.51" x 3.94")
Weight	1000g