

## iVMS-4200

### Overview

iVMS-4200 is a versatile video management software for the DVRs, NVRs, IP cameras, encoders, decoders, etc. It provides multiple functionalities, including real-time live view, video recording, remote search and playback, file backup, etc., for the connected devices, meeting the needs of small and medium-sized projects.

With its flexible deployment schemes and easy-to-use operations, iVMS-4200 client software is widely applied to the surveillance project of financial, public security, military, telecommunications, transport, electricity, education, water conservancy industries, etc.

### Model

iVMS-4200

### Main Features

#### General

- Management and viewing interface for IP cameras, IP domes, encoders, DVRs, NVRs, etc.
- Application in local area network and wide area network
- E-map function
- User permission management
- Embedded web server supporting web browsing function
- Friendly user interface providing easy operations

#### Network

- NTP protocol supported
- HiDDNS, IP Server, PeanutHull and DynDNS for dynamic IP connection
- Two-way audio and broadcast function
- Search online devices automatically (SADP)

#### Live View

- Different view modes available in live view and playback
- Standard screen layout: 1, 4, 6, 8, 9, 13, 16, 25, 32, 36, 64;
- Wide screen layout: 4, 6, 7, 9, 12, 16, 24, 36, 48
- Main/auxiliary screen live view
- Manual recording and picture capture supported

#### PTZ Control

- Local and remote PTZ control supported
- Control keyboard and USB joystick supported
- Auxiliary focus function
- 3D positioning function

#### Record

- Remote manual recording supported
- Schedule recording, event recording supported

#### Playback

- Local and remote playback supported
- Up to 16-ch synchronous playback supported
- Instant playback supported
- Event playback supported

#### Alarm Management

- Camera Linkage for tampering alarm/video loss alarm
- Manually turn on/off alarm output
- PIR alarm, wireless alarm and emergency alarm supported
- Multiple linkage actions supported

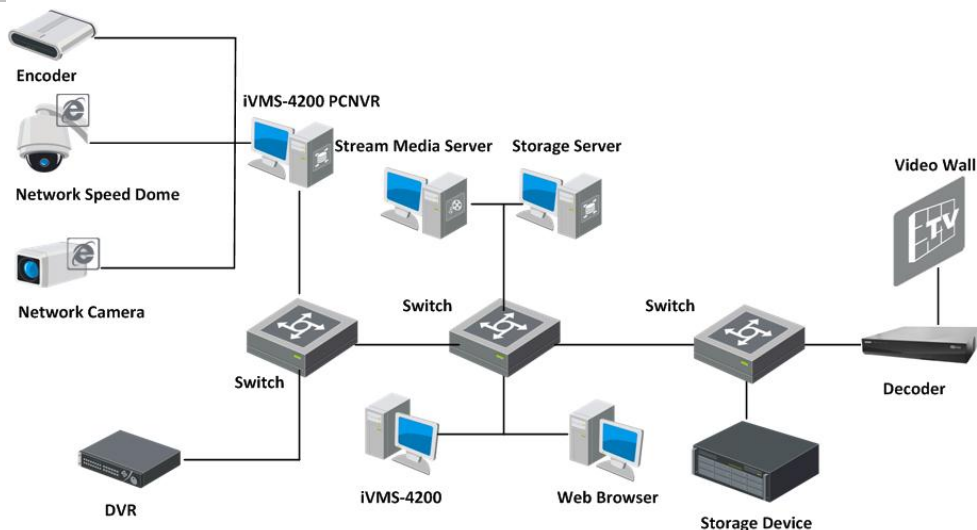
#### Video Wall Display

- Multi-screen display mode supported
- Video wall display for playback supported
- Alarm triggered video wall display supported

#### Backup

- Import and export configuration file
- Log search and backup

### Typical Application



## Specifications

<b>Model</b>		iVMS-4200
<b>Operating System</b>		Microsoft Windows 7/Windows 2008 (32/64 bit) Windows 2003/Windows XP(32 bit)
<b>Client</b>	<b>User</b>	Up to 51 users supported
	<b>Encoding Device</b>	Up to 256 encoding devices supported
	<b>Group</b>	Up to 256 groups supported
	<b>Channel</b>	Up to 64 channels can be imported to each group; Up to 1024 channels can be imported to all groups
	<b>Storage Server</b>	Up to 16 storage servers supported
	<b>Stream Media Server</b>	Up to 16 stream media servers supported
	<b>Decoding Device</b>	Up to 64 decoding devices supported
	<b>Live View</b>	Up to 64-ch live view supported at a time
	<b>Auxiliary Screen Preview</b>	Up to 3 auxiliary screens supported for preview
	<b>Playback</b>	Up to 16-ch playback supported at a time; Up to 16-ch synchronous playback supported
	<b>E-map</b>	Up to 256 E-maps can be added
	<b>Hot Region</b>	Up to 255 hot regions can be added
	<b>Hot Spot</b>	Up to 64 camera hot spots can be added; Up to 64 alarm input hot spots can be added
	<b>PTZ Control</b>	Up to 256 presets / 1 pattern / 16 patterns can be added; Each patrol supports up to 32 presets
<b>Storage Server</b>	<b>User</b>	Up to 32 users supported
	<b>Record Performance</b>	Up to 64-ch×2Mbps supported at a time
	<b>VOD Performance</b>	Up to 64-ch×2Mbps supported at a time
	<b>iVMS-4200 Client</b>	No limit for the amount of iVMS-4200 connected to the storage server.
<b>Stream Media Server</b>	<b>Input/output stream</b>	Up to 64-ch input video stream supported; Up to 200-ch output video stream supported

## Recommended Configurations

PC Configuration Bitrate (single P-frame)	The maximum amount of accesses supported for live view channel				
	CPU: Intel Core i7-3770K 3.50GHz Memory: 4GB Graphic card: AMD Radeon HD 6700 Series Operating System: Windows 7 (32 bit)	CPU: Intel Core i5-2320K 3.00GHz Memory: 4G Graphic card: NVIDIA GeForce GT 430 Operating System: Windows 7 (32 bit)	CPU: AMD Phenom II X4 965 3.40GHZ Memory: 4G Graphic card: ATI Radeon HD 5770 Series Operating System: Windows XP SP3	CPU: Intel Core 2 Quad Q8200 2.33GHZ Memory: 4G Graphic card: NVIDIA GeForce 9600GT Operating System: Windows XP SP3	CPU: Intel Core 2 Duo E8400 3.00GHZ Memory: 2G Graphic card: ATI Radeon HD 4800 Series Operating System: Windows XP SP3
(352*288)*768K*25	64	64	64	63	48
(640*480)*1.5M*25	57	50	48	25	22
(704*576)*2M*25	49	38	36	19	17
(960*576)*2M*25	36	26	27	12	12
(1280*720)*6M*25	23	18	16	8	7
(1280*960)*6M*25	20	15	13	6	5
(1600*1200)*8M*25	12	8	8	3	3
(1920*1080)*9M*25	12	7	7	3	3
(2048*1536)*13M*25	8	6	6	2	2
(2560*1920)*7M*6	6	6	6	5	4

**Note:** The parameters recommended above are for reference only.