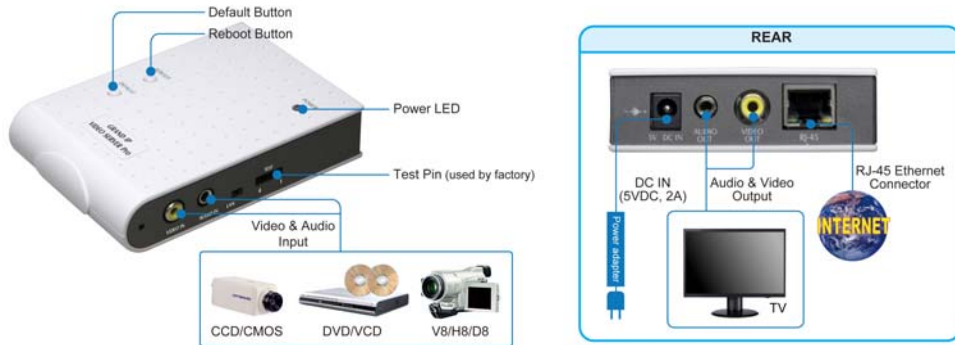


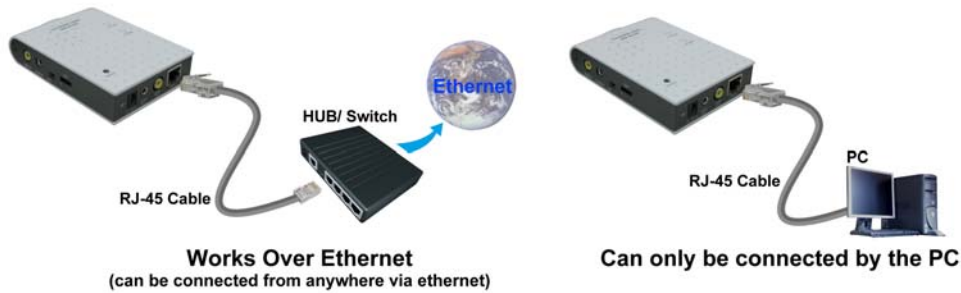
QUICK GUIDE

1. Hardware Overview



2. Connecting to a Network

Connect the Grand IP Video Server Pro to an Ethernet hub or switch by using a standard cable. You can also connect directly to a computer by using the cross-over wire provided.



3. Software Installation

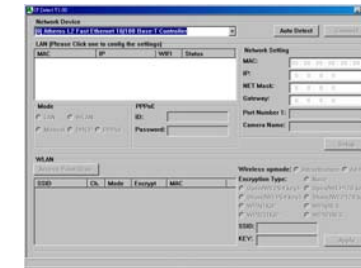
Insert the driver CD into your CD-ROM drive, then the autorun function will start up the shell program.



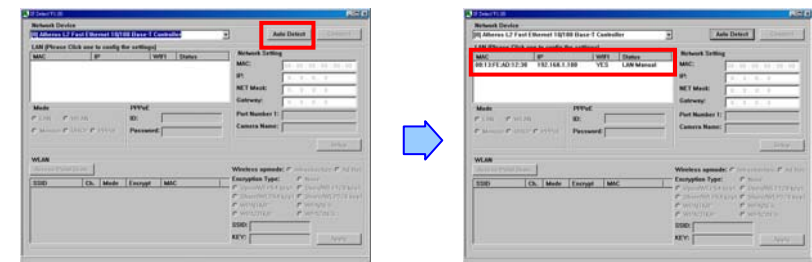
- Step1:** Press the **Install Audio and Video Codec** to install the audio and video codec.
- Step2:** Press the **Install Mega Pixel IP Camera Viewer** to install the surveillance software.
- Step3:** Press the **Install IPCam Setup** to install the **IPCam Setup** program.
- Step4:** The shortcut icons (**Mega Pixel IP Camera Viewer** and **IPCamSetup**) will be shown on your desktop after installing.

4. Network Installation

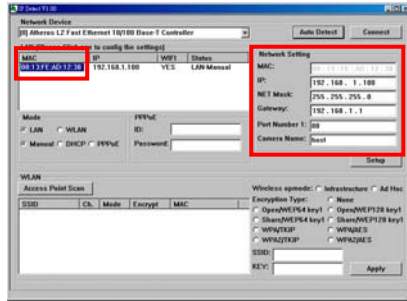
Step 1: Double click on () IPCam Setup's execution file on the desktop, and the following screen will appear.



Step 2: Click the "Auto Detect" button, and your IP Video Server Pro's MAC and default IP Address will be listed.



Step 3: Click on the “MAC”, and the “IP”, “Net Mask”, “Gateway”, “Port Number 1” and “Camera Name” will be displayed in the “Network Setting” area.



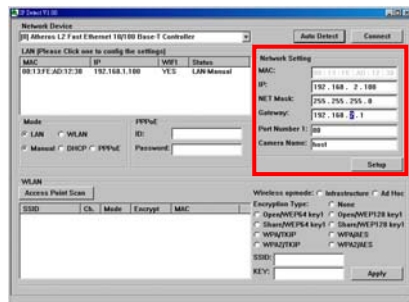
NOTE: The IP Address, Net Mask and Gateway must be corresponding with your network settings for you to access the video server. You can follow the steps to get your network information.

Click “Start” → “All Programs” → “Accessories” → “Command Prompt”. A MS-DOS window will appear. Type “ipconfig” and then press “Enter” to get your network information.

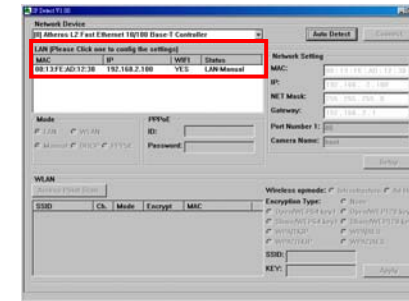


- Assign IP Address, Netmask (Subnet Mask) and Gateway (Default Gateway) for the Video Server Pro. (You must use the same Net Mask (ex. 255.255.255.0) and Gateway (192.168.2.254). You can use any IP address between 192.168.2.1-254, but make sure that the IP Address has never been used or is used by another IP addressable device.)

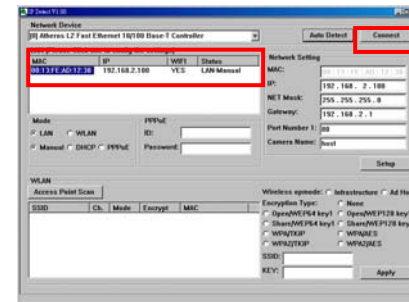
Step 4: Directly modify the “IP Address”, “Net Mask” and “Gateway”, and click “Setup” to save.



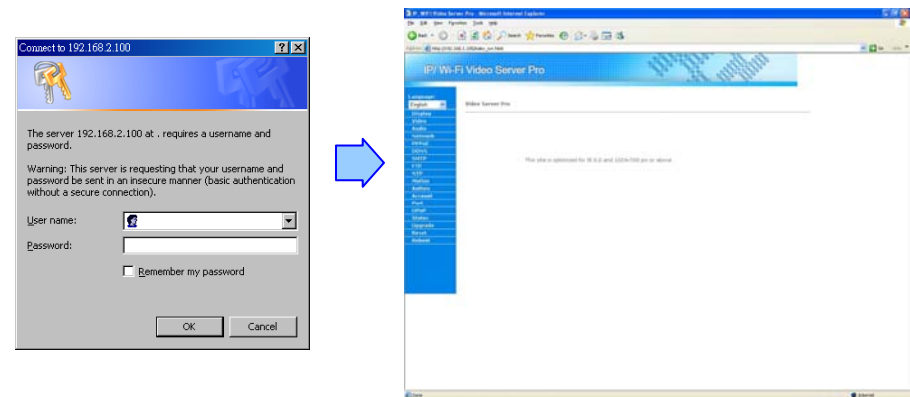
Step 5: Click the “Auto Detect” button again, and the new network information will be shown.



Step 6: Select the “MAC” and click the “Connect” button to connect the IP Video Server Pro.



Step 7: When the login screen appears, enter the user name and password (default user name: **root**, default password: **admin**), and click the “OK” button to login your IP Video Server Pro.



PS. Please consult the user manual in Driver CD for more detail.